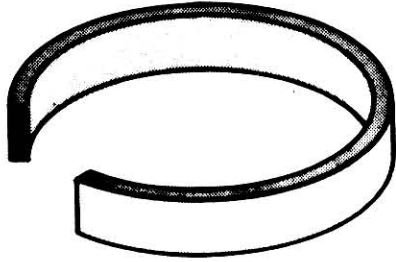


# NORTH AMERICAN SEAL

& Packing Company

530 Van Ness Ave. Fresno, CA 93721  
(559) 264-7325 - Fax: (559) 268-5207



## WEAR RINGS

TYPE WR

STYLE 82 (INCH SIZES)

### CHARACTERISTICS

North American Seal's Wear Rings prevent metal to metal contact and the consequent galling and scoring of cylinder bores and rods, thus allowing choice of the most economically feasible piston materials.

NAS Style 82 Wear Rings are supplied butt cut and are designed to provide smooth piston operation for greater overall

efficiency and longer cylinder life.

North American Seal's Wear Rings are manufactured from a specially formulated reinforced nylon which has extremely low wear. The high strength and stiffness provides for excellent port-passing applications.

### MATERIAL

- TYPE: Reinforced Nylon
- HARDNESS: Rockwell 101 M
- FLUID COMPATIBILITY: Hydraulic oils, water emulsions, water glycol, and phosphate ester fluids.

### SIZES

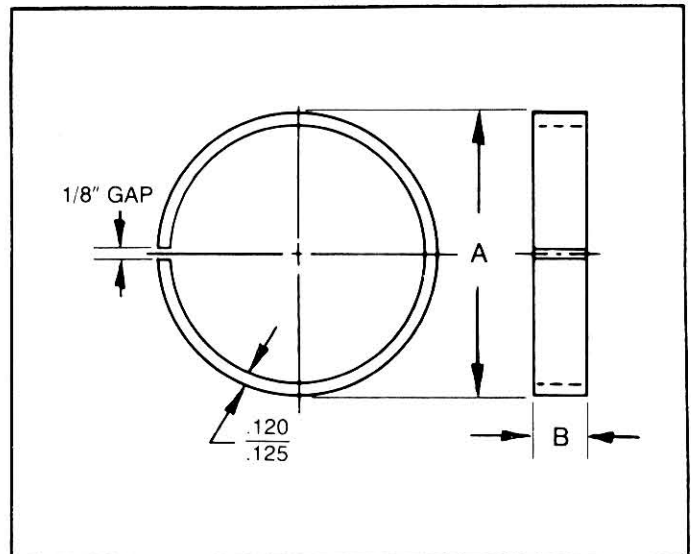
- DIAMETER: 1" to 14"
- WIDTH: 3/16" to 2"
- CROSS SECTION: 1/8"

### ORDERING INFORMATION

Please review current price list for tooling availability before ordering. A nominal tooling charge may be required for some non-tooled sizes.

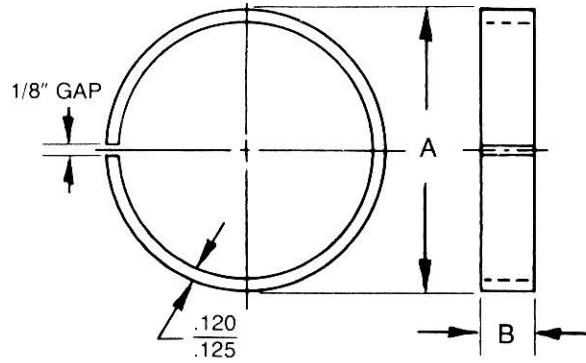
Add Prefix WR to signify Wear Rings.

e.g. A Wear Ring 3 1/2 O.D. X 1/2 H is Part No: WR 0350-050



# WEAR RINGS

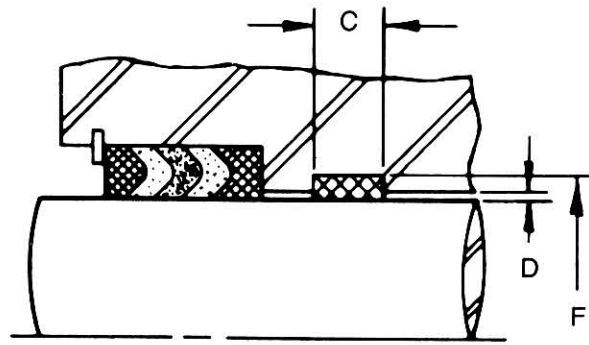
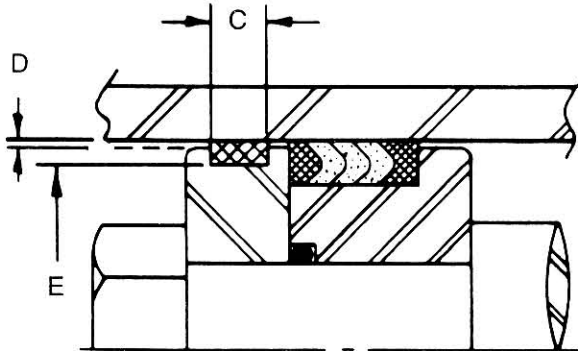
## TYPE WR STYLE 82 (INCH SIZES)



- (A) Ring O.D.
- (B) Ring Width
- (C) Groove Width
- (D) Clearance Dia. =  $\frac{1}{32}$ "

### PISTON APPLICATION

- (E) Groove Dia. =  
Max. Bore Dia. =  $-.252 \pm .002$



### ROD APPLICATION

- (F) Groove Dia. =  
Max. Rod Dia. =  $+.252 \pm .002$

### CHART FOR WEAR RING GROOVE CALCULATION

WIDTH	$\frac{1}{4}$ .250	$\frac{3}{8}$ .375	$\frac{1}{2}$ .500	$\frac{5}{8}$ .625	$\frac{3}{4}$ .750	1 1.000
RING (B)	.240/.250	.365/.375	.490/.500	.615/.625	.740/.750	.990/1.000
GROOVE (C)	.260/.265	.385/.390	.510/.515	.635/.640	.760/.765	1.010/1.015